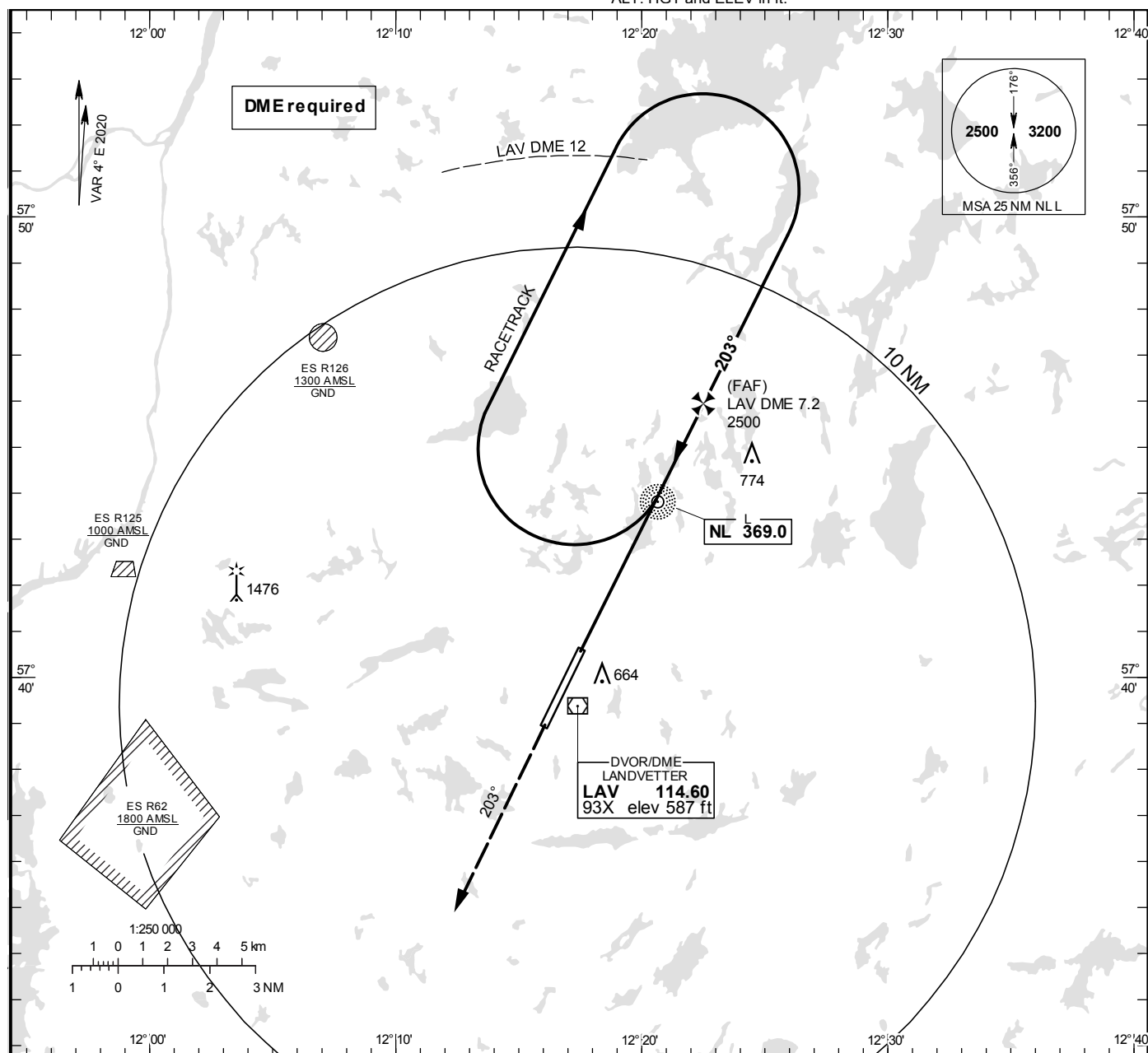


NDB RWY 21

LANDVETTER TOWER	118.605
LANDVETTER ATIS	118.380
GÖTEBORG APPROACH	124.680

OCH are related to THR.
 Circling OCH are related to AD ELEV.
 BRG are MAG
 ALT, HGT and ELEV in ft.

INSTRUMENT APPROACH CHART – ICAO



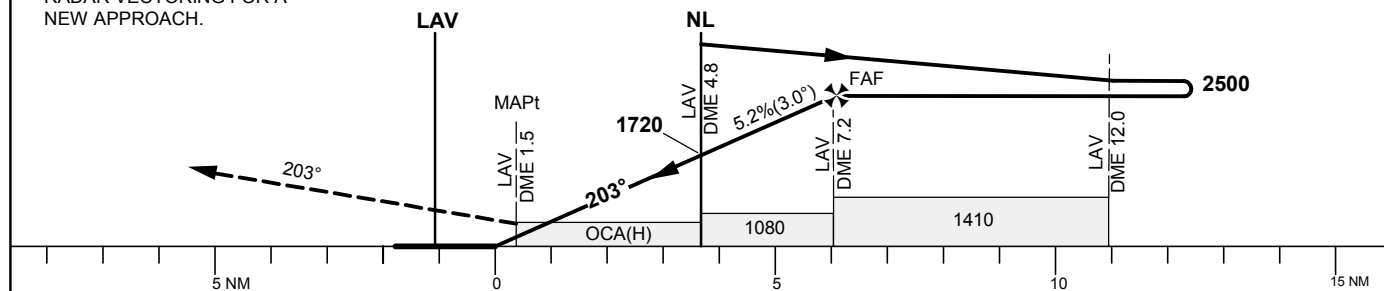
TA 5000 ft AMSL

Procedure 1° offset

*Timing not authorized for defining the MAPt

Special COM Failure procedures see ESGG AD 2.22

CLIMB STRAIGHT AHEAD TO 3000,
RADAR VECTORED FOR A
NEW APPROACH.



OCA (H)					Final approach	Distance FAF-MAPt 5.8 NM*						
Cat of ACFT	A	B	C	D	DME LAV	NM	7	6	5	4	3	2
Straight-in Approach	920(420)				ALT	ft	2429	2110	1790	1470	1148	823
					GS	kt	80	100	120	140	160	180
					Time	min:s	4:21	3:28	2:54	2:29	2:10	1:56
					Rate of descent	ft/min	425	530	635	745	850	955

CHANGE: Editorial